



THE RED DOOR

FIRST PRESBYTERIAN CHURCH OF BIG FLATS, NY

Founded 1827 ----- "Pride In Our Past – Faith In Our Future"

[/www.bigflatsfirstpres.org/](http://www.bigflatsfirstpres.org/)

SESSION UPDATE – MIF COMPLETED

On Thursday, June 16, your Session unanimously voted to forward your (MIF), or **Ministry Information Form**, to the Presbytery. This document is the culmination of many hours of thoughtful and prayerful discussion amongst ourselves and with our Interim Moderator (**Kirk Allen**), following a set format directed by the Presbyterian Church. Within the format were multiple questions and tasks. These tasks involved the formulation and acceptance of "Vision Statements and Mission Statements" along with identification of characteristics viewed necessary for an Interim Pastor specifically for our congregation.

The chief job of an Interim Pastor will be identifying, with the help of congregational members, our Permanent Pastor. It is our belief that God has already planted the seed of inspiration in our future Pastor. There will be multiple committees set up in the next several months made up of members of the congregation. This is a time of excitement and fellowship where any and all who desire to be involved can help shape our church pathway. Some committees will involve brainstorming, others will be for working contracts. A committee will also involve individuals who will need to travel to observe prospective candidates preach just to name a few.

For now, the forwarded MIF will allow the Presbytery to get our request disseminated locally and if needed later, nationally. Once we have contracted an Interim Pastor, your Session is finished with that specific function. For continuity, **Pat Fitzgerald** has been appointed Pastor Nominating Committee/Search Committee Chairperson/Mid-Council Search Committee Chairperson. Further work will involve all our talents, patience and time. With God's love, our prayerful efforts, and the guidance of our Presbytery, our Permanent Pastor will be found. We are all spiritually connected and should continue to nurture each other, as we are truly a family.

The next Session meeting will be July 6. We will continue to provide periodic updates.

Thank you.
Your Session

July 3 - September 4
Morning Worship 9:30 AM

Circle of Love

JOYS AND CONCERNS

The last month has been very special in the life of our little church. It is truly amazing to think of all that goes on in our community of faith! June was a hot month, but it cooled in comparison with the warmth of our spirit!

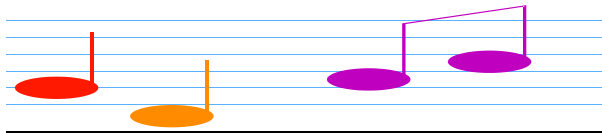
- We continue to be blessed to have a wonderful group of speakers and worship leaders in our pulpit. In June, this group included: **Deborah Kuehner Pat Fitzgerald, Rev. Ted Cooper, Bill Howells, Rev. Juanita Dickinson, and Nancy Pangia**. Thanks to all who serve as leaders on our journey of faith.
- Our music ministry makes our spirits soar! Our choir members are resting their voices until the fall, and we eagerly await their return. We thank **Nancy Compton, Mary Ellen Rudnick**, and each choir member for all you do to make each Sunday special!
- Thanks to the hard work of our Big Flats Presbyterian Quilters, our **Sixth Annual Quilt Raffle** is now underway (see article on the next page). Thanks to all who helped make this beautiful quilt!
- On Father's Day, June 19, we met to worship, eat, and socialize at our annual church picnic, held at the Big Flats American Legion. Our worship message focused on the many "Ties That Bind" us together. Following our service, we enjoyed a wonderful array of delicious picnic fare. Masters of the grill, **Rocky Peters, Dom Scaringe, and Mark Slowik** kept the burgers and hot dogs coming, and the legendary "**Big Flats Bakers**" provided an amazing variety of delicious side dishes and desserts. Thanks go to **Mark and Ann Slowik**, who coordinated this event, and to all our volunteers for making this such a special day!
- Congratulations to Tyler Stevens, who has achieved the rank of Eagle Scout!



In our concerns this month, we ask for prayers for: **Linda Grimes** (eye surgery), **Brandon Davis** (nephew of Sheila French and Lisa McGill), **Denise Wiskowski** (sister of Debbie French), **Peter Middaugh, Joyce & Sam Dean, Alan Giglio** (Pat Fitzgerald's nephew), **Reva Soutar, Nick Rudnick, Emma Gardner, Flora Berke, Irene Hooley, Ginnie Schweizer, Dudley & Marie Shea, Marge Larocque** (Gigi Price's mother), and others who are dealing with ill health, surgery, loss, or life changes. Please continue to pray for our servicemen and women and their families and for peace in our troubled world.

Do you have a special joy or concern that you would like to share with our Big Flats Presbyterian Church community? See Bill Howells or any Session member, and we will include your news in our Joys/Concerns column.

FROM THE EDITOR: This issue of THE RED DOOR covers the months of July and August. Our next newsletter will be the September, 2016 issue. Have a great summer! Thank you for your support and continuing interest in our publication.



FROM THE CHOIR LOFT

If there is anyone out there who would like to provide music for a summer service or perhaps you know someone who would be willing to provide music, please give **Nancy Compton** a call. I am willing to make the contact. We have several openings, and if you would like to give your talent a whirl in a very non-threatening environment this would be the time and place. Or perhaps you could do a duet or a trio???? We DO pay our soloists. It's not a lot, but it would reimburse gas and time. If you need accompaniment, that, too, can be arranged. This would include vocalists and all manner of instrumentalists. If you can help out, please call the **Director of Music, Nancy Compton, at 562-3903.**



Our choir will return to the loft on **September 11**. That will be the 15th anniversary of the terrorist attacks on the Twin Towers in Manhattan. Something special is in the works if we can muster enough folks to participate. Please carefully consider the needs of the choir. We really need some additional members. Perhaps you can't participate every week. That's fine, as long as we know in advance when you will not be present. We can work with everybody's schedule. Please consider joining us on **September 11 at 9:30 AM**. If you would like to discuss this further, please call **Nancy at 562-3903**. Otherwise, just show up at 9:30 on the 11th. This is a very special way to help and support our little church. The choir has always been a vibrant group. We are all proud of our contributions to our services, but we need you to help keep this special group alive. We get a lot done, but we laugh a lot, too. Please - consider joining us. We'll save you a seat.

PROPERTY COMMITTEE NEWS

On Saturday morning, June 4, our Property Committee held its second 2016 Welles Land work party. Over one dozen committee members and other volunteers worked to clear dead trees, brush, and debris from the southeast corner of the property. Included in the group were two members of Boy Scout Troop #87 – **Winfield Houston and James Zunita**. Thank you to all our hard workers!

In other committee news – we have recently changed phone service carriers from Time Warner to Empire Access. Not only will we have our two phone lines (one required for our security system and a second for our regular 562-8048 number) but also Wi-Fi/Internet capability (Welcome to 2016, Big Flats Pres!). This enhanced service will only cost us an additional \$23 per month. Special thanks go to **Kathy Johnston** for her hard work in reviewing various carrier options and in securing a very advantageous plan for our church.



SIXTH ANNUAL QUILT FUNDRAISER UNDERWAY

Our Big Flats Presbyterian Quilters have finished their work – what a wonderful project! This year's beautiful quilt is "**Basket of Logs**" a log cabin design. It features a variety of earth tones and will complement any room décor. Thank you to all who were involved in making our quilt!

Now it's up to our congregation members to do our part. Tickets are now available for our annual quilt raffle. The price is **\$2 each or three for \$5** (the drawing will take place in December). In order for our fundraiser to be successful, we are going to need help selling tickets. In previous years, volunteers have purchased tickets themselves, sold to family members and friends, and have helped sell tickets at Miniers on Saturdays in November. We plan on continuing this approach in 2016, but we would also like to expand our sales locations to reach more potential ticket buyers. If you have any ideas about potential high-traffic locations for showing our quilt, PLEASE see **Ann Hayes or Nancy Compton**.

Remember that this is a major fund-raiser for our church. We have done very well in previous years. Please help us to make this a successful year as well. Questions? See Ann Hayes or Nancy Compton.

PHOTO GALLERY



DEBORAH
KUEHNER



REV. JUANITA DICKINSON



REV. TED COOPER



First Presbyterian Church of Big Flats, NY

JULY – AUGUST 2016



WEEKLY EVENTS

SUNDAY	9:30 – 10:30 AM	Morning Worship
TUESDAY	12:00 – 2:00 PM	Food Pantry is open

SPECIAL EVENTS

July 3	Bill Howells will lead our worship service.
July 10	Marcy Cathey (Chemung Valley Montessori School) will be our speaker.
July 17, 24, 31	Rev. Beth Frigard will lead our worship services.
July 17	Holy Communion
July 31	“Pennies from Heaven”
August 7, 14, 21, 28	Worship Leaders – To Be Announced
August 28	“Pennies from Heaven”
August 28	Information due for the September RED DOOR
September 11	Morning Worship at 10:30 AM

COMMITTEE MEETINGS

Worship Committee	Meets following church service on July 3 and on August 28
Property Committee	July 6 and August 3 – 6:00 PM (Wednesday)
Church Session	July 6 and August 3 – 7:00 PM (Wednesday)

IF YOU NEED PASTORAL CARE

Session members have agreed to act as liaison to individuals requiring some church related service in the absence of a pastor. Therefore, if something happens with a loved one or a congregation member (death, sickness, hospital), a session member could help facilitate getting help.

Our church answer machine (**562-8048**) is checked regularly, or session members may be contacted directly:

Pat Fitzgerald	562-3395	Jill Knight	738-2229
Scott French	562-8895	Stewart Potter	259-2502
Tom Halm	562-2197	Gigi Price	737-0441
Barb Horn	562-3239	Mary Ellen Rudnick	562-3757
Kathy Johnston	562-6818	Ann Slowik	739-3769
Luke Gromer (Youth Elder)			